

A group of seven children standing outdoors in a line. They are wearing various colorful clothing, including shorts and pants. The background is a bright, outdoor setting with some foliage. The text "Introducing Spaandan B Austin" is overlaid in the center in a large, bold, black font.

Introducing Spaandan B Austin

Bangladesh

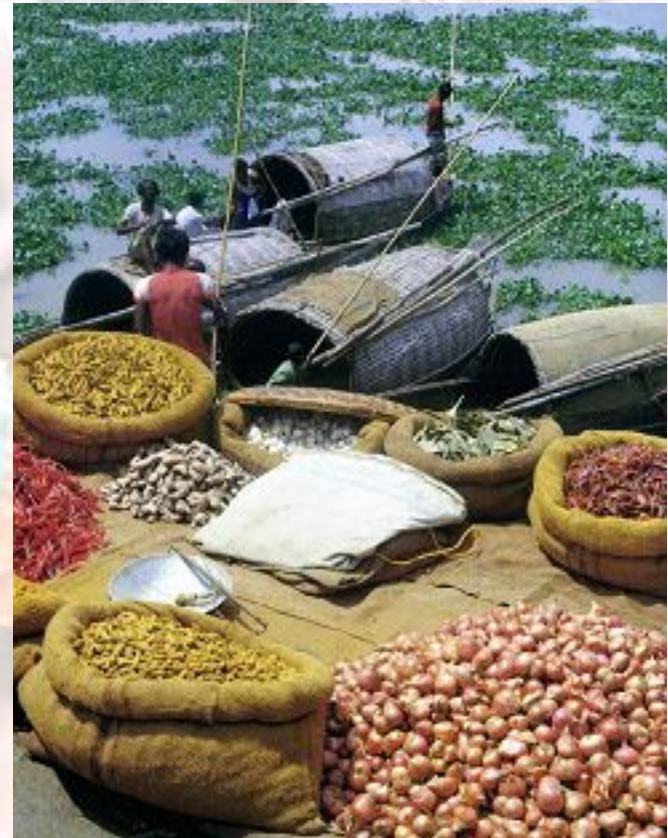
Everyday Challenges...

- Literacy at 40%
- Access to quality health care. Doctor: patient ratio is 1:12,500
- Need for economic development. 83% of the 135 million people earning less than \$2/ day



SpaandanB

- Initiated in 1998 by expatriate Bangladeshis
- Non-profit organization, volunteer driven
- Donations tax deductible
- Credible portal for fund-raising during national disasters
- First of its kind



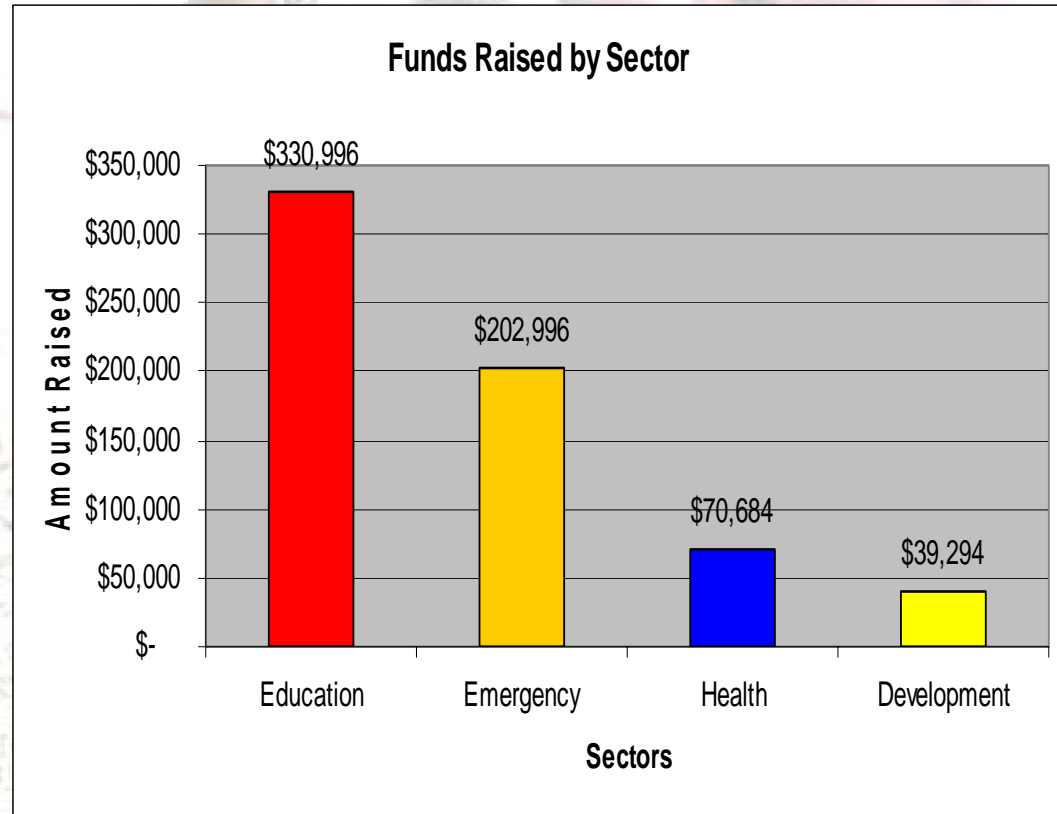
SpaandanB Continued...

- Focused on supporting projects in Health, Education & Development in Bangladesh
- Values and objectives are aligned with the United Nations Millennium Development Goals



Track record

- Supported more than 40 programs
- Total donations to date exceed \$580,000
- Administrative cost less than 5% on most projects



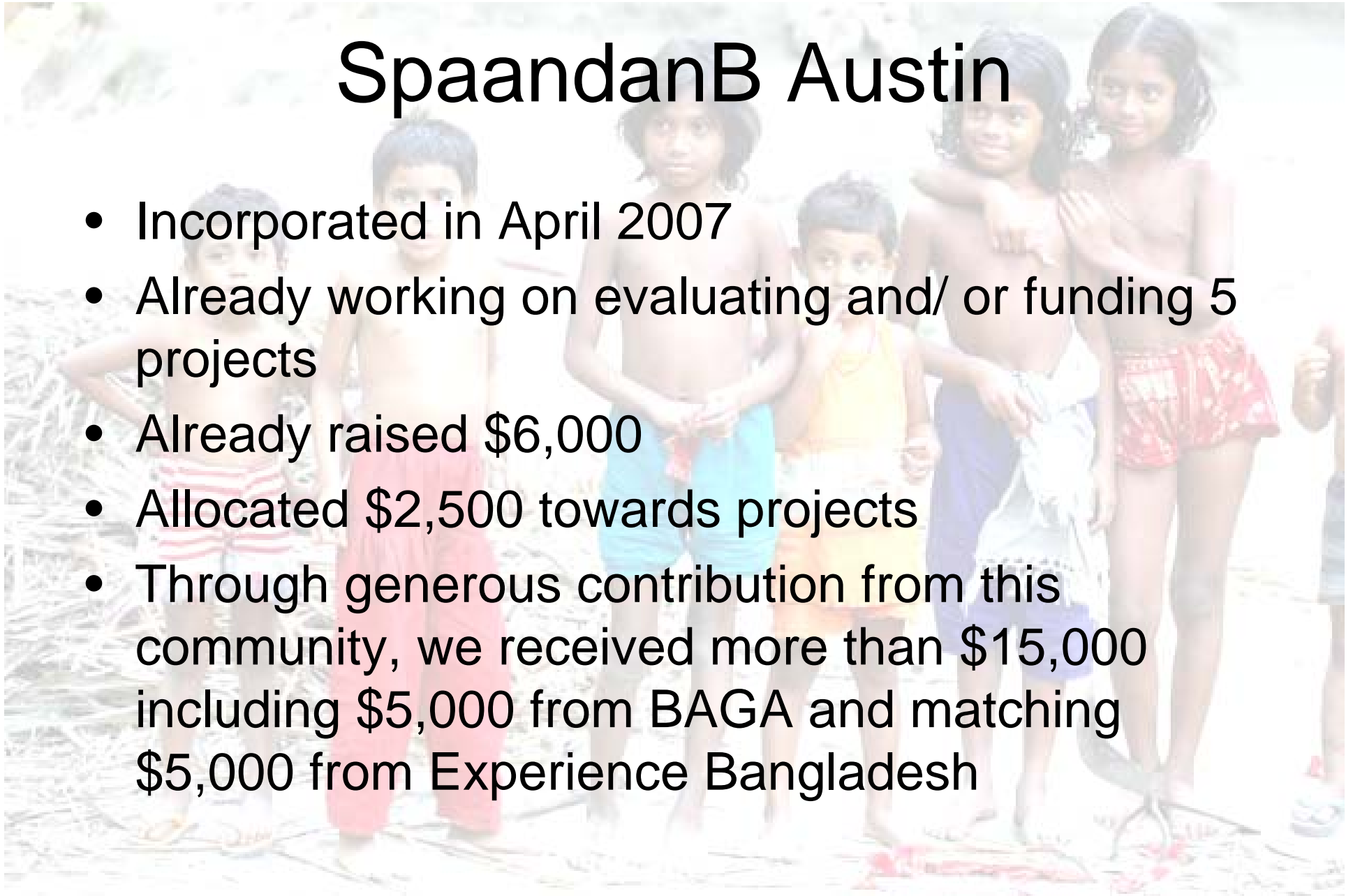
Distinguishing Factors

- Rigorous project selection
- Accountability and Quality Control
- Credible partnerships with local agencies
- Procedural correctness



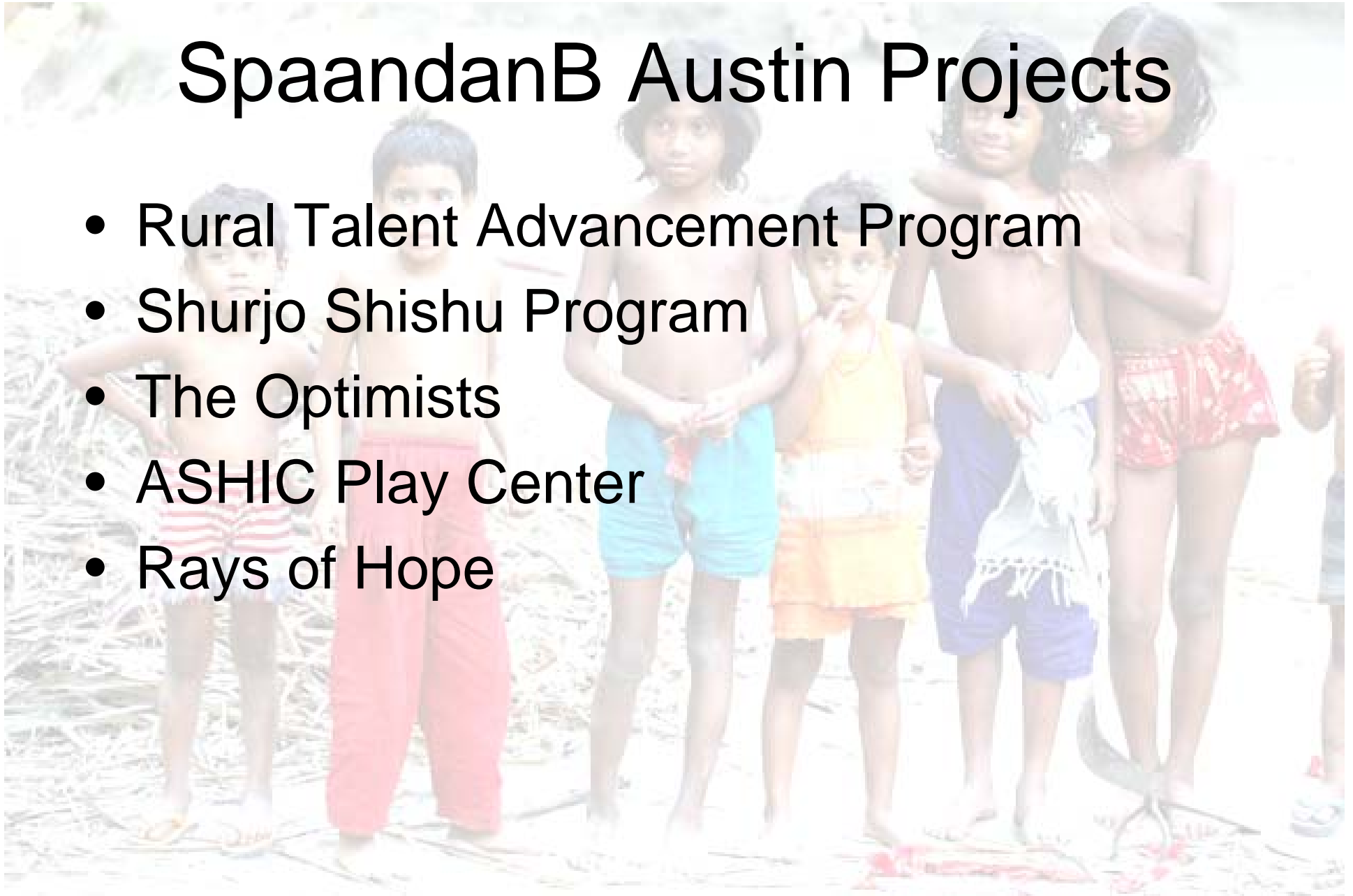
SpaandanB Austin

- Incorporated in April 2007
- Already working on evaluating and/ or funding 5 projects
- Already raised \$6,000
- Allocated \$2,500 towards projects
- Through generous contribution from this community, we received more than \$15,000 including \$5,000 from BAGA and matching \$5,000 from Experience Bangladesh



SpaandanB Austin Projects

- Rural Talent Advancement Program
- Shurjo Shishu Program
- The Optimists
- ASHIC Play Center
- Rays of Hope



Rural Talent Advancement Program (RTAP)

- Provide scholarships to selected meritorious students in Tangail
- Create a 'gifted program'
- Selected schools receive support to build computer labs, libraries etc.
- Already reached more than 100 students; built 2 computer labs and 2 libraries



**Met 2007 target of \$900 for 5 students
at \$180 per student/ year.**

2008 target: 10 students + library

DCI: Shurjo Shishu



- Child sponsorship program, focused on
 - Reducing school dropout rates
 - Providing quality education and healthcare
 - Protecting and promoting child rights
- Have already reached more than 500 children

Met target for 2007: \$1200 for 10 children at \$120 per child/ per year
Open for 2008 sponsorships

The Optimists

- Child sponsorship programs across the country
- Sponsorship will pay for food, education, clothing and medical care for the whole year.
- Each child to be supported over a period of 10 years.

**Target for 2008: \$ 1,800 for 10 children
at \$180 per child/ per year**



ASHIC Play Center

- ASHIC Foundation for childhood cancer in operation since 1994
- Proposed Play Center at Shishu Hospital
- Equipped with books, toys, chairs, tables and a playmate to watch over the children
- Approximately 450 children will use the center per month



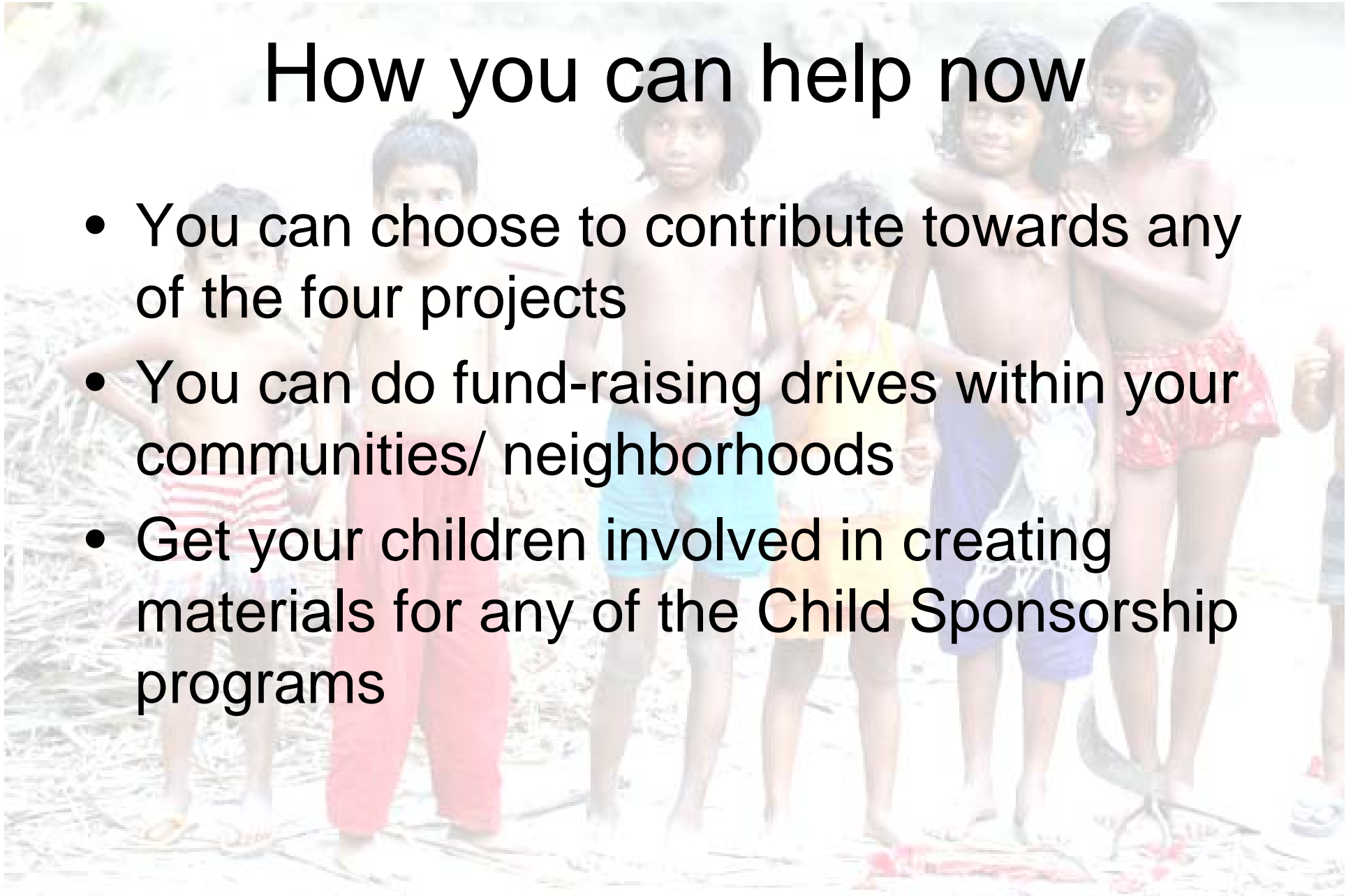
Target: \$4,500 - includes establishment cost + first 2 yrs operations

Total targets to be met

RTAP	\$2,800 for 10 students + \$1,000 for library (2008)
The Optimists	\$1,460 for 8 children (2008)
Shurjo Shishu Program	\$2,400 for 20 children (2008)
ASHIC Play Center	\$4,500 (2007 – 08)
Total	\$12,140

How you can help now

- You can choose to contribute towards any of the four projects
- You can do fund-raising drives within your communities/ neighborhoods
- Get your children involved in creating materials for any of the Child Sponsorship programs



Future of our chapter

- Awaiting approval of non-profit status
- More autonomy and ability to change the organizational structure
- Looking for project ideas from within the local community
- Ability to invite more active participation from a wide group of interested parties

